



Câmara Municipal de Castelo Branco

Praça do Município,

6000-458 Castelo Branco

Tel: (+351) 272 330 330 (call to the national fixed network)

E-mail: investcb@cm-castelobranco.pt



[/municipiocastelobranco](#)

[/visitcastelobrancooficial](#)



[/visitcastelobrancooficial](#)



[/camara-municipal-de-castelo-branco](#)



Câmara Municipal
**CASTELO^U
BRANCO**

Invest CB

#easytoinvest

INVESTOR SUPPORT GUIDE



Invest with Confidence



In this guide you will find essential information on investment opportunities, strategic sectors, tax incentives, as well as the support services available to support your investment initiatives and turn them into a successful experience.

Castelo Branco City Council is committed to facilitating your journey, providing open and transparent dialogue, streamlining bureaucratic processes and promoting close collaboration between the public and private sectors. We believe that the success of entrepreneurs in Castelo Branco is a reflection of their joint commitment to the economic and social development of the region.

Dear Investors and Partners,

I am delighted to welcome all those who consider Castelo Branco a destination for investment and business development. As Mayor of Castelo Branco, it is an honor to present you with this Investor Support Guide, which represents our commitment to creating a favorable environment for sustainable economic growth.

With its strategic location, Castelo Branco is a meeting point between tradition and innovation, with modern infrastructures and an entrepreneurial community. It is in this sense that we believe we offer an ideal setting for the success of investment projects.

On behalf of the entire community of Castelo Branco, I express my sincere gratitude for your interest in investing in Castelo Branco. We are confident that this partnership will be mutually beneficial, contributing to the sustainable growth of our city and building a prosperous and promising future for all.

[SIGNATURE]

Leopoldo Rodrigues
Mayor of Castelo Branco

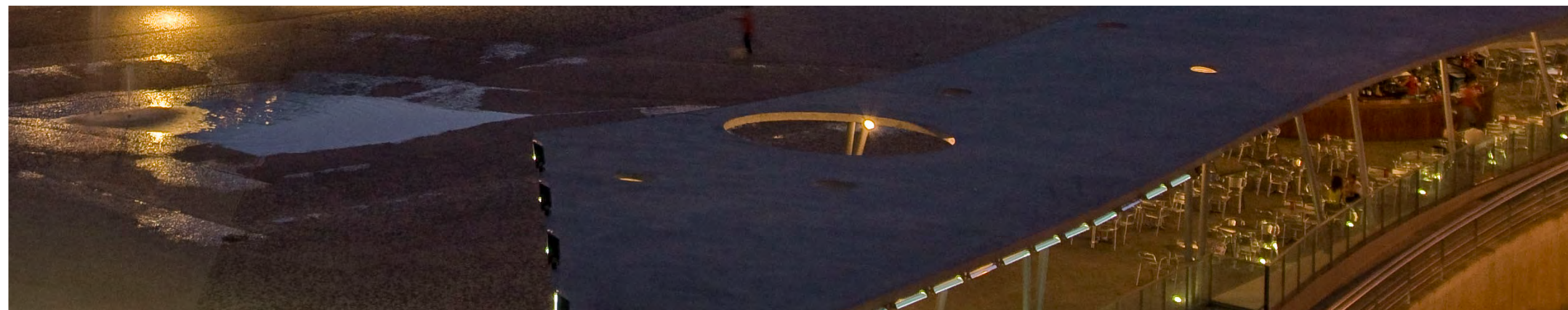
Title:
Invest CB
#éfacilinvestir - Guia de Apoio ao Investidor

Texts
Município de Castelo Branco
Co-ordinated by
Patrícia Coelho, Célia Ferreira
Editorial Design
Market Access e Município de Castelo Branco

Printing
500 copies
All rights reserved. Reproduction, in whole or in part, by any means (electronic, mechanical, photocopying, recording) is not permitted without written authorisation from the authors.

Table of Contents

Municipality of Castelo Branco	P 08
Socio-Economic Profile	P 16
Infrastructures to Support the Business Structure	P 20
Business Support Infrastructures	P 24
Investment Support	P 30
Tax Conditions and Municipal Incentives	P 34
Educational offer	P 40
Environment	P 44



Castelo Branco

A land of opportunities

As a municipality that is part of the National Program for Territorial Cohesion, Castelo Branco is a center for cultural and leisure activities, with a rich cultural environment and regular events that encourage community participation, promoting a sense of belonging that strengthens ties between residents and visitors.

The municipality is a favorable area for business development, home to a number of national, international and multinational industrial companies. To this end, incentives for investment are a priority, with measures that support and boost sustainable economic growth in the region.

Since 2023, UNESCO has welcomed Castelo Branco to the Unesco Creative Cities Network, in the Crafts and Popular Arts category, with the Embroidery of Castelo Branco.

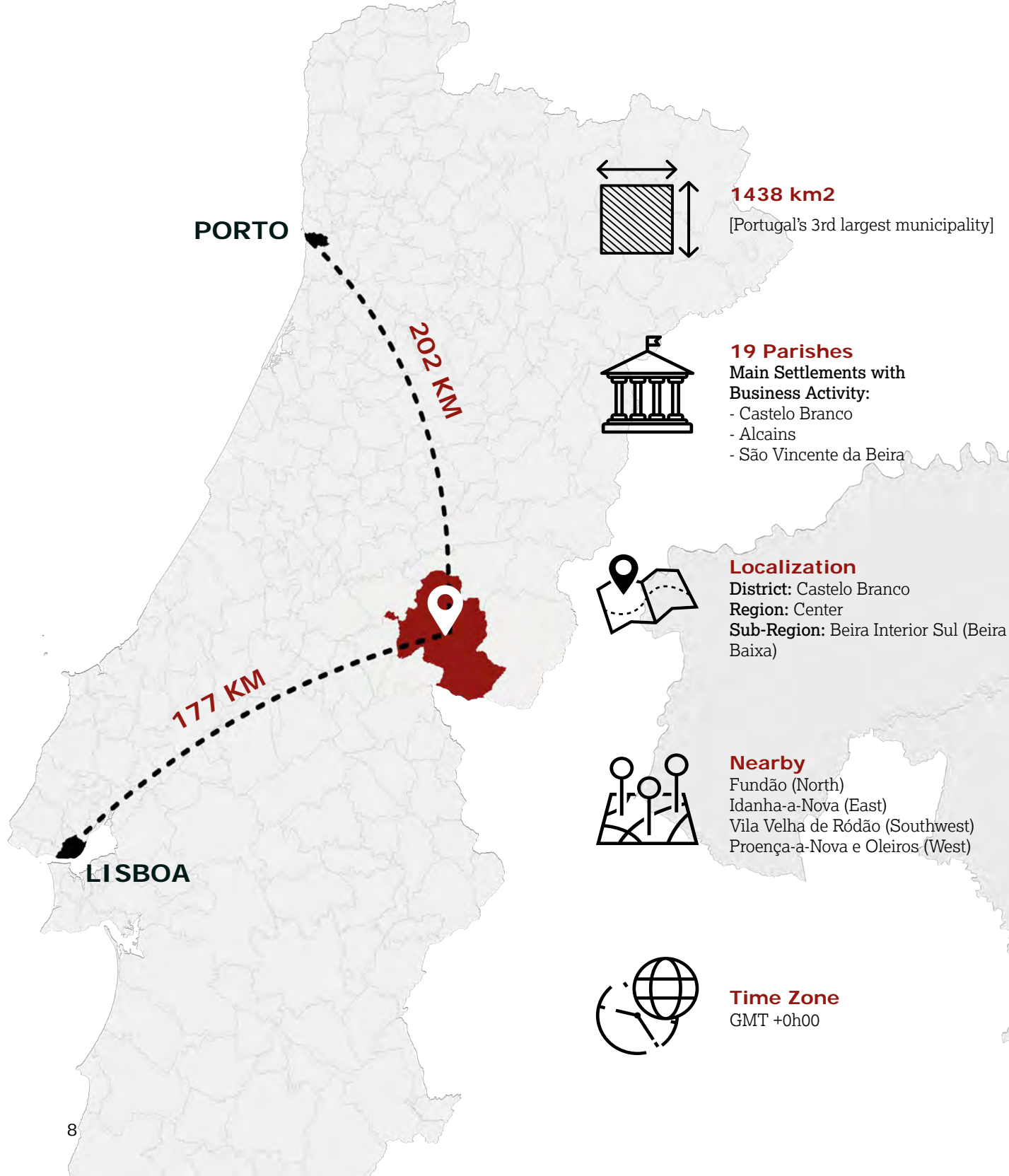
Municipality of Castelo Branco

A city, district capital and county seat, Castelo Branco is a municipality in which quality of life is a daily reality and a given among its people. With its size, it is a refuge from the big cities, where the harmony between nature, urban life and business life thrives.

Distinguished by Deco Protesto as the sixth district capital in the country with the best quality of life [2020], Castelo Branco is a city appreciated by its inhabitants for its affordable cost of living, low tax rate, safety, cleanliness, educational and cultural offer, as well as its strategic position on the Iberian Peninsula. In 2023, the municipality was awarded 4 stars and considered a “Youth Friendly Municipality” for its municipal policies aimed at young people.

In addition, the easy accessibility of natural areas and outdoor spaces provides peace of mind and confidence in building a solid future for the families who choose to settle here. More than just a peaceful place, this is a municipality that values its environment, with significantly lower levels of pollution than large cities, where the air quality is considered good and the risk of atmospheric pollution is practically non-existent. Here, sustainable development is a daily practice. Lower environmental, visual, and noise levels are just a few of the benefits that make Castelo Branco unique.

In addition to these distinctive factors, the low levels of traffic and quality transport infrastructures also stand out as the backbone of local mobility quality, turning every journey into a serene experience - it's possible to cross the entire city in just 5 minutes!





A23 | IP2 | N18

A23 Highway - Beira Interior
Connection Torres Novas - Guarda, through Castelo Branco, Portalegre and Santarém.

Main Route 2 [IP2]
Bragança - Faro connection, from the north to the south of Portugal, through the mainland.

National Road 18 [N18]
Connection Guarda [Beira Alta] - Ervindel. It is the second longest road in Portugal..

Bus Station:
Castelo Branco Bus Station.

Complementary Route IC8:
Connection to Coimbra.

IC 31
Connection to Spain via Montfortinho
(construction scheduled for 2024)



Castelo Branco Station Beira Baixa Line

CP Services: Intercidades | Regional and InterRegional

Stations: Castelo Branco, Alcains e Lardosa

Stops: Retaxo/Cebolais de Cima e Benquerenças

The rail transport system is provided by CP - Comboios de Portugal. The municipality is served by the Beira Baixa line, which runs from Lisbon to Guarda, with connections to the Eastern line from Abrantes and the Northern line from Entroncamento.

On an inter-regional level, rail transport provides connections to Vila Velha de Ródão, Fundão and Guarda.



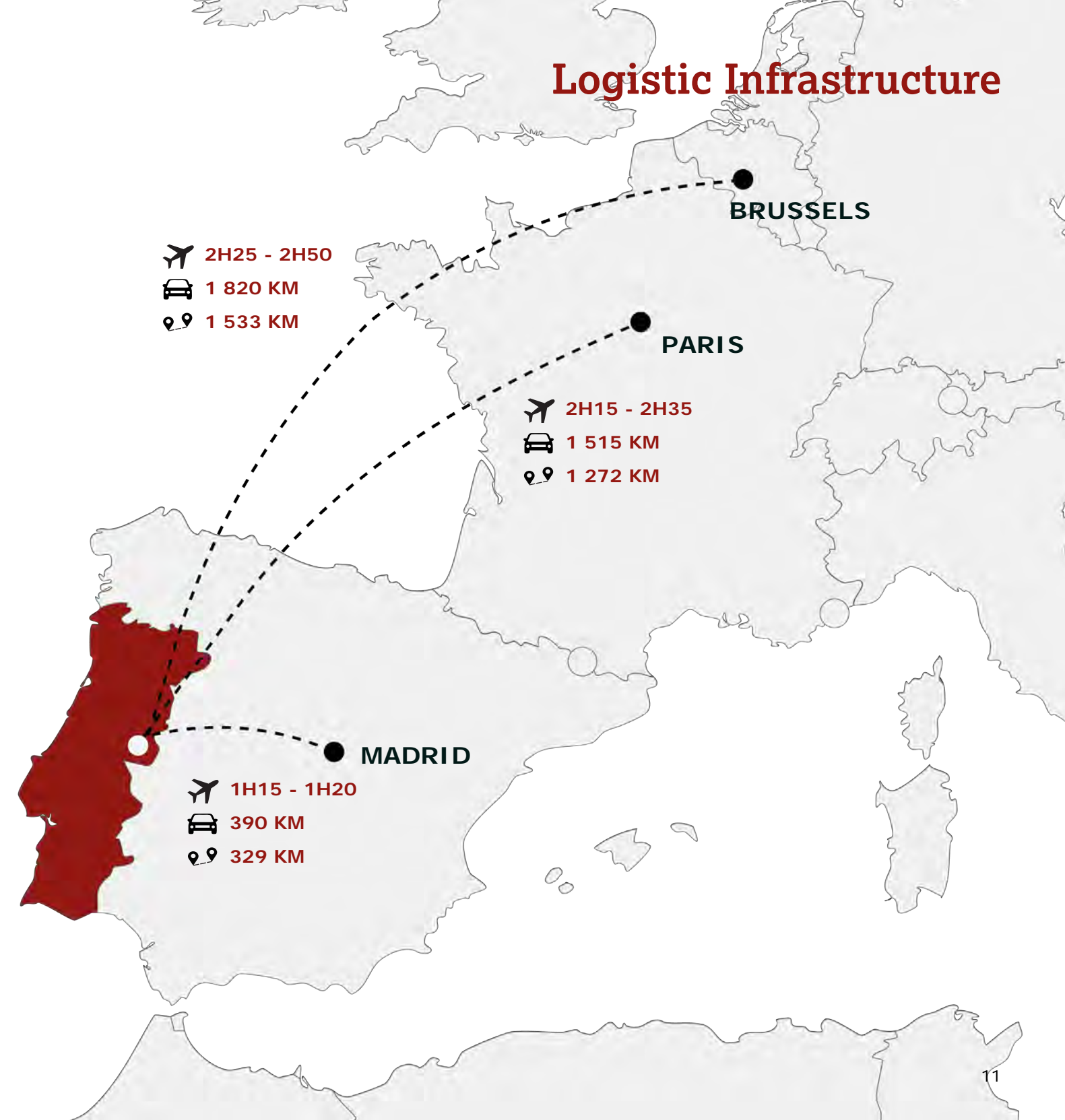
Castelo Branco Municipal Aerodrome

This G-Golf class airspace, with an ICAO LPCB callsign, serves several purposes, including:

- Logistics Support Base [BAL];
- Meteorological station certified by the IPMA;
- Civil Aviation School;
- Castelo Branco Air Resources Center;
- Castelo Branco Aeroclub;
- Dassault Aviation Business Services Maintenance Unit;
- Iberian Air Resources Center of the European Civil Protection Mechanism, within the scope of RESCUE.

Portugal's unique position facilitates access to the European Union's extensive free trade area, simplifying commercial transactions from anywhere.

Logistic Infrastructure





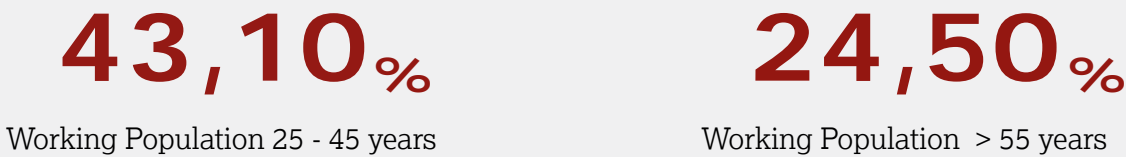
Demographic

The demographic study in its municipal aspect is essential for understanding the dynamics of Castelo Branco's population, as well as the main implications for the various areas of interest relevant to attracting investment to the city.

According to statistical information obtained from the 2021 national census, the municipality has a standing population of 52,366 inhabitants, with a population density of around 36 inhabitants/km2.



CCP Observatory 2022



Census 2021



Twinning and Cooperation Agreements

Traditionally, Castelo Branco has been very receptive to different cultures and traditions. This openness to the outside world has been strengthened and consolidated by building international relations through the signing of Twinning and Cooperation Agreements with various cities on the international scene:



Zhuhai



Umuarama
& Petrolina



Huambo



Manchester



Pulawy

Iberian-Raian Urban Triangle [TRIURBIR]



Castelo Branco
& Portalegre



Cáceres
& Plasencia



Historical Facts

Castelo Branco, a town with remote origins and signs of different peoples, such as the Romans, Visigoths, and others. The first charter and the name were given to it in the 13th century by the Templar Master Pedro Alvito. The construction of its castle began under the mantle and protection of the Templars. For about a hundred years it was the seat of the Three Kingdoms - Portugal, Castile, and León.

Throughout history, it has suffered several invasions that have left their mark (Peninsular Invasions and later the First French Invasion in 1807). It has several monuments of cultural importance such as the Jardim do Paço and the Paço Episcopal, among others.

There are several illustrious inhabitants of Albicastia, but notable among them are the doctor Amato Lusitano and the poet João Roiz. Over the years, various small industries of different trades have been set up here. We would highlight the blacksmiths, locksmiths, tinsmiths, saddlers, and shoemakers. Watering cans, boilers, braziers, and oil lamps were also produced. There was also grain milling and numerous bread ovens throughout the city. We can't forget the fabrics produced in Cebolais and Retaxo and the saraboças and sorrubecos for men and raxas and castelletas for women.

Today we have the MUTEX, the textile museum, which honors all those who have contributed to the development of the parish of Cebolais de Cima and Retaxo through the textile industry. Castelo Branco's embroidery has recently been included in UNESCO's Creative Cities Network, validating the territory's development strategy in terms of valuing the traditional arts and giving it more impetus.

10º

Best Municipality
to do Business
(Center zone)

International Trade

1 843 021 M€

Imports Volume [2022]

111 330 858 M€

Exports Volume [2022]



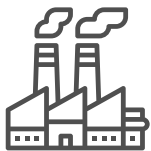
4,3/km2
Business Density



9 670
Jobs



96,2%
Purchasing Power
[per capita 2021]
Compared to the national
index of 100%



275
Industrial Businesses



6 131
Businesses in the Region



1 100€
Average Monthly Wage



Socio-Economic Profile

Located in the Central Region of Portugal, Castelo Branco is emerging as a hub of opportunity and growth, driven by a unique combination of factors that make it a strategic location for investment.

Castelo Branco stands out for the exceptional nature of the local workforce, the result of a robust education system and active partnerships with universities and innovation hubs. Manufacturing capacity operates continuously, offering all investors a dynamic business environment.

Among the most important industries that shape this region’s economic identity are those that have become the true pillars of its growth. From the automotive industry to the agri-food sector, from the refrigeration industry to information technology [IT] - each one makes a unique contribution to the prosperity and diversification of the business fabric.

In addition to its operational attributes, the municipality stands out for its proximity to Spain and important logistics centers, which positions Castelo Branco as a strategic link in the region’s economic fabric.

The competitive value of the land, especially in the context of business fixation, combined with the existence of a Key Account Manager dedicated exclusively to investors, offers personalized support throughout the legalization process, ensuring an efficient transition for new ventures. The existence of a municipal aerodrome adds an extra dimension to accessibility, facilitating connections and enabling greater fluidity at an international level.

At the same time, the municipality has implemented proactive support policies, providing significant incentives to attract companies to the center, and recognizing the vital role they play in local economic development. This vision is complemented by municipal measures that support not only companies but also families who choose to settle in this region, promoting a sustainable work-life balance.

These measures and welcoming conditions are backed up by the National Quality of Life Index which, as explained above, shows a very interesting performance.

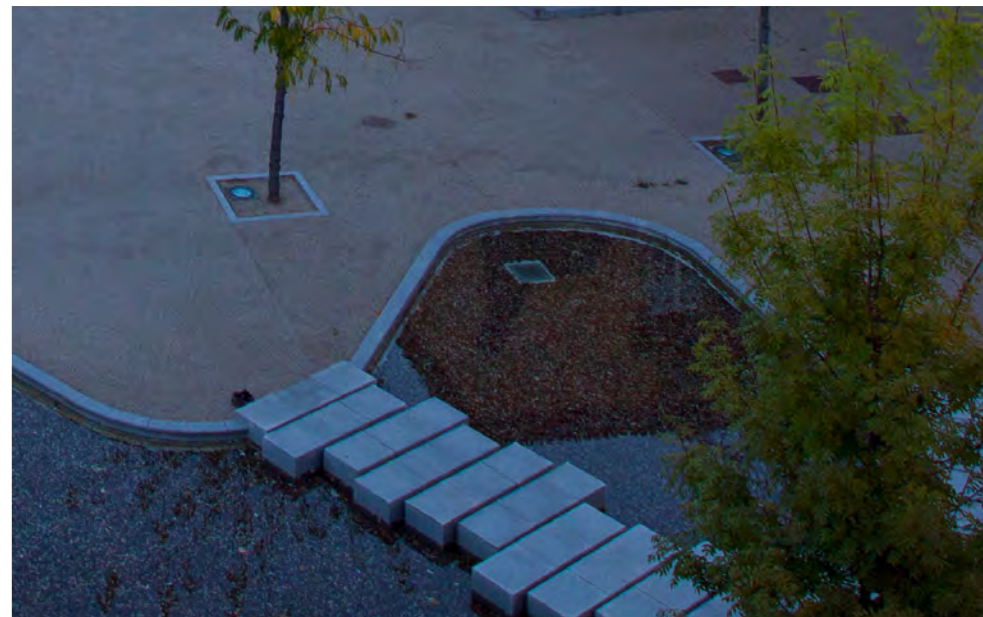
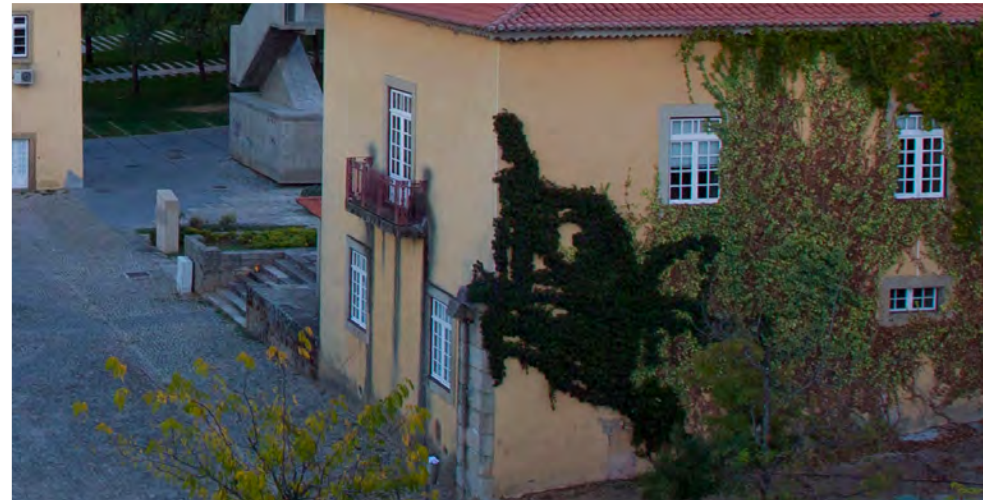
In this context, we will explore in more depth the various aspects that make Castelo Branco a promising destination for investors and residents looking for opportunities.



Qualified Workforce

Castelo Branco is emerging as a dynamic and innovative economic enclave, shaping its performance through differentiating elements that make it stand out on the global business scene. The municipality stands out for having differentiating points that give the region a unique identity and turn it into a hotspot for investors and companies looking for excellence, collaboration and sustainable growth.

The skilled workforce, the result of significant investment in education and professional training, is one of the pillars that underpins Castelo Branco's economic success. The strategic proximity to centers of talent, knowledge, and innovation, such as universities and innovation hubs, creates an environment conducive to the transfer of knowledge. Business incubators, technology parks and research centers foster collaboration, promoting a culture of entrepreneurship and constant innovation. An example of this dynamism is the company called Vox, which specializes in the development of geolocation systems in the area of waste - they graduated from the Polytechnic Institute of Castelo Branco, were incubated at the CEI - Centre for Innovative Companies and are now part of the AEBB - Beira Baixa Business Association.



Business Ecosystem

At the heart of the business ecosystem, the diversity and interconnection of companies from different sectors provide a unique environment. Castelo Branco's economic dynamism is driven by the solid foundations of the agri-food, cold storage, automotive and information technology [IT] industries. These four spheres, each with their own distinctive characteristics, converge to create the driving force behind the local business economy, shaping the region's economic profile in a remarkable way.

Labor Competitiveness

Alongside these dynamics, the competitiveness of labor costs strengthens Castelo Branco's attractiveness for investment, allowing companies to optimize resources without compromising the quality of the workforce or reducing employee satisfaction.

Companies such as Mecalbi - Engineering Solutions, Schreiber Foods Portugal, APTIV, Centauro, Dinefer, Practiline, VENDAP, Santos e Vale, T.E.C. - Transportes Eduar do Cardoso, Lda., among many others who have chosen Castelo Branco, attest to the region's ability to catalyze business success.

By efficiently combining the excellence of the workforce, proximity to knowledge and innovation, an intense entrepreneurial ecosystem, competitive labor costs, and the presence of important companies, Castelo Branco stands out as a county of opportunities, shaping an economic future that transcends local borders.

Business Growth Support Platforms

In the context of contemporary economic dynamics, the intervention of municipalities in the promotion and sustainability of the business fabric is crucial. Castelo Branco's progressive and entrepreneurial vision stands out for the implementation of local platforms designed to catalyze business growth.

These initiatives not only illustrate the municipality's commitment to economic development, but also reflect a holistic approach that recognizes the interdependence between local entities and business success.



INVESTOR DESK

Website: <https://www.cm-castelobranco.pt/investidor/>
Address: Praça do Município | 6000-458 Castelo Branco
E-mail: investcb@cm-castelobranco.pt
Telephone: [+351] 272 330 330

The Investor's Desk will be the space dedicated to welcoming those interested in investing in Castelo Branco. The Company Space, which is part of a network of single points of service for companies, will be supported and centralized in the same place, with services provided by the Central and Local Administration, through online channels that are part of the National Business Support Network. Following a logic of proximity and personalized service, these are two important and duly coordinated solutions for providing an adequate response to future investors.

INOVCLUSTER – ASSOCIATION OF THE AGROINDUSTRIAL CLUSTER OF THE CENTER



Website: <https://www.inovcluster.pt/>
Address: Edifício do Centro de Apoio Tecnológico Agro-Alimentar, Zona Industrial de Castelo Branco, Rua A | 6000-459 Castelo Branco
E-mail: geral@inovcluster.pt
Telephone: [+351] 272 001 160

InovCluster's primary objective is to facilitate the boosting of the competitiveness of local and regional production systems while seeking to consolidate the position of the Central Region of Portugal both nationally and internationally. To achieve this, the organization establishes a platform for dialogue between the main players in the sector, offering support to companies in various areas, such as Innovation, Research, Development and Technology Transfer (RTD), Knowledge Transfer, Training, Creation of new products, Services and Processes, Marketing and Internationalization.



AEBB – BUSINESS ASSOCIATION OF BEIRA BAIXA



Website: <http://aebb.pt/>

Address: Av.^a do Empresário, Praça NERCAB | 6000-767 Castelo Branco

E-mail: geral@aebb.pt

Telephone: [+351] 272 340 250

The AEBB - Business Association of Beira Baixa is an entity dedicated to the development and strengthening of the business fabric in the Castelo Branco area. As a business association, AEBB plays a fundamental role in promoting economic growth and enhancing the competitiveness of local companies. They actively engage in various areas of activity, particularly in representing and defending the interests of their members, promoting initiatives and projects aimed at the sustainable development of the region, as well as facilitating collaboration networks among local businesses. Additionally, AEBB plays a crucial role in promoting training and capacity-building initiatives.

CEI - CENTER FOR INNOVATIVE COMPANIES



Website: <http://www.cataa-cei.pt/>

Address: Av.^a do Empresário, 1 | 6000-767 Castelo Branco

E-mail: geral.cei@cataa-cei.pt

Telephone: [+351] 272 241 400

The CEI was founded with the aim of supporting entrepreneurs and companies in the effective development of their business ideas, transforming them into sustainable business realities. As an incubator, it seeks to stimulate the development of the entrepreneurial community in the region by providing spaces and qualified services to support entrepreneurs, technology transfer, and fostering cooperation among companies, R&D institutions, and other relevant players. Within the entrepreneurship scope of the Innovative Business Center, the Young Entrepreneur Factory stands out, aiming to generate a set of initiatives to promote entrepreneurial skills in both the school and local communities.

CATAA -AGRIFOOD TECHNOLOGY SUPPORT CENTER



Website: <http://www.cataa.pt/>

Address: Zona Industrial de Castelo Branco, Rua A | 6000-459 Castelo Branco

E-mail: geral@cataa.pt

Telephone: [+351] 272 001 161





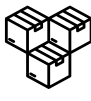
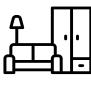
CATAA is an association responsible for managing the Agricultural and Food Technological Support Center, a scientific and technological infrastructure comprising various laboratory units. This structure is focused on research and development, technology transfer, and training, particularly in the agri-food sector. As an integral part of the strategy of Castelo Branco Municipality, CATAA plays a crucial role in supporting local businesses. In addition to contributing to the development of new products, services, and process improvement, the association also dedicates itself to monitoring market trends and technical empowerment, adjusting its services to the specific needs of regional companies and enhancing their competitiveness.



Business Support Infrastructures

Industrial Parks

Industrial parks, namely the Castelo Branco Business Location Area and the Alcains Industrial Zone, play a fundamental role in the economic development of the Municipality of Castelo Branco, significantly boosting local progress. These industrial parks, set up and managed by the City Council, are home to a number of companies from sectors of activity and anchor projects for the region, such as:

 Refrigeration and HVAC	 Processing of glass and ornamental stones	 Plastic products for construction and other plastic goods
 Services	 Machinery and tractors for agriculture, livestock and forestry	 Electrical and electronic equipment for the automotive industry
 Clothing and Apparel	 Agri-Food	 Distribution (retail and wholesale)
 Furniture and Mattresses	 Metal Structures and Constructions	 Graphics and Advertising
 Wood	 Information Technologies (IT)	 Aeronautics

Logistics Centers 1.

Both of Castelo Branco’s industrial parks offer the right infrastructure, in an accessible way and are covered by important private and public logistics centers.



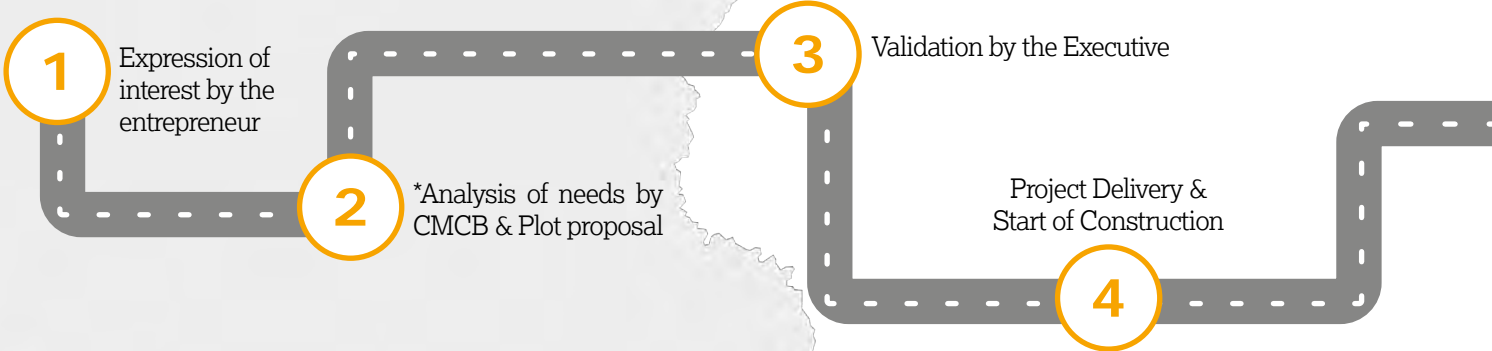
2. ALE Castelo Branco

The **Castelo Branco Business Location Area [ALECB]** plays a decisive role in the socio-economic development of the municipality, as a place to settle and as an instrument to support the setting up of business initiatives.

General Information		
Total Area	-----	2946000.00m2
Free Area	-----	163080.36m²
Available Plots	-----	47 Plots (Between 900m2 and 190000m2)
Promoting Body	-----	CM Castelo Branco
Available for new companies	-----	Sim
Companies set up	-----	267
Designation of Regulation	-----	ALE Castelo Branco
Location		
Geographical Location	-----	39.8119, -7.52364
Region	-----	Beira-Baixa
Municipality	-----	Castelo Branco
Parish	-----	Castelo Branco
Services		
Waste collection; Public transport; Maintenance; Catering; Sports and leisure.		
Infraestruturas		
Infrastructure; Water supply network; Wastewater and rainwater drainage network; Natural gas network; Energy and telecommunications network; Fiber optic network; Wastewater pumping station; Eco-center; Parking areas; Green spaces.		

Allotment Procedure

The Investor's Desk will be the space dedicated to welcoming those interested in investing in Castelo Branco. The Company Space, which is part of a network of single points of service for companies, will be supported and centralized in the same place, with services provided by the Central and Local Administration, through online channels that are part of the National Business Support Network. Following a logic of proximity and personalized service, these are two important solutions and properly coordinated to provide an appropriate response to future investors.



Business Location Regulation

Regulations accessible via QRcode or link:
<https://bit.ly/RLECMCB>

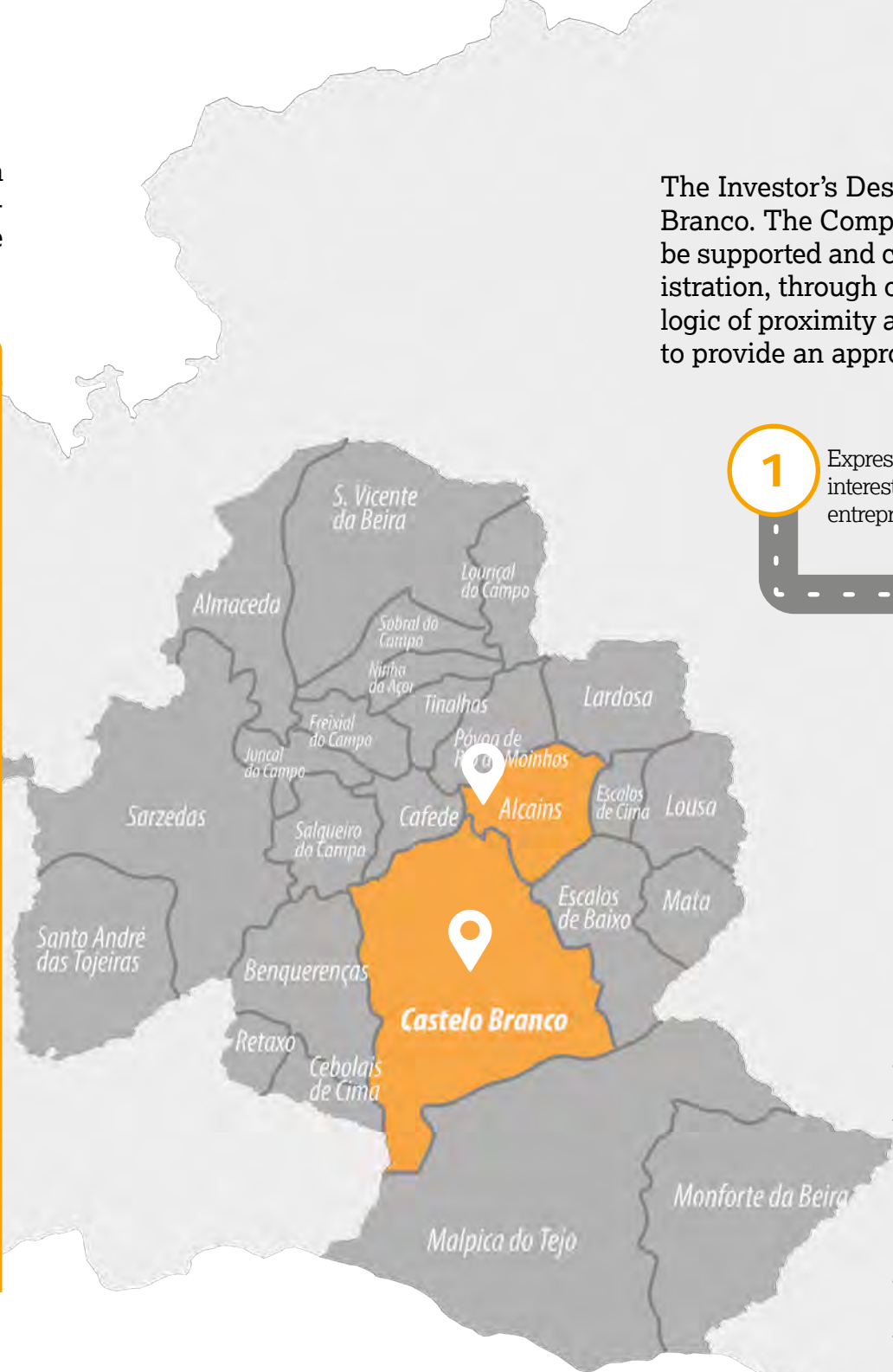


Alcains Industrial Zone 3.

Alcains industrial zone is a practically complete industrial area, occupying an area of 19,366.00m2. The business fabric established there is mainly dedicated to the exploitation of wood, granite, trade-in cleaning and hygiene goods, metalwork, and carpentry.

Feteira Industrial Zone 4.

A new industrial zone is being planned in the zone of Feteira, with an ideal location, next to the aerodrome and the REFER line, occupying an area of roughly 30ha, with the possibility of extending this area by another 100ha.





Common Areas

In addition to the industrial parks, there are other important infrastructures to support the business fabric, namely common spaces for holding conferences, congresses and/or public or private business activities.

As well as serving as a venue for activities, facilitating presentations and providing technical support, all these spaces provide a favorable environment for interaction between participants in other initiatives.

- **Castelo Branco Contemporary Culture Center;**
- **António Salgado Municipal Library;**
- **CEI - Center for Innovative Companies (Auditorium and FabLab);**
- **Cine-teatro Avenida;**
- **Castelo Branco Polytechnic Institute;**
- **Fábrica da Criatividade (Workshops, auditorium and studios);**
- **Study Work Center (Open 24 hours);**
- **Alcains Cultural Center.**



Fotografia: Adrià Goula



Concession of Municipal Land for Investment 1.

The municipality, after assessing the needs of the potential investor, draws up a land proposal which, after agreement by both parties, generates a reservation approved by the Mayor and taken to the Town Hall Meeting.

The land will only be sold after evidence of construction by the investor, in accordance with the in force.

The price regulated by the Municipality for the Area is **1€/m² for commerce** and **0.01€/m² for industry**. These regulations can be consulted on the website.

Investment Support

Support for investment granted at municipal level is vital for Castelo Branco as it boosts economic development, helps create jobs, strengthens infrastructure and improves the quality of life of the community. This strategic approach has proved to have a positive and lasting impact on the well-being of the population and the economic sustainability of the region.

Municipalities that, like Castelo Branco, offer tax incentives, adequate infrastructure and a favorable business environment become more attractive to investors and have often been chosen as destination cities for important business investments at a national level.

Based on the basic principle of continuous improvement, municipal investment is directed towards improvements in local infrastructure, such as roads, energy, telecommunications and public services, benefiting the community as a whole. The diversification of Castelo Branco's economy has been another beneficial consequence, reducing dependence on specific sectors and increasing economic resilience.

In addition, local investment support has also significantly stimulated innovation and technological development, positioning Castelo Branco as an important innovation center at a national level.



Photograph: Pedro Martins

2. Municipal Licensing Fees & Deadlines

In accordance with the Municipal Regulations and the respective table of fees and other municipal revenues currently in force, the following fees will be payable:

Assuming that the process is duly instructed with the elements listed in Ordinance 113/2015 of April 22 and with the favorable opinions of the entities external to the Municipality, the following deadlines are estimated:

Project Appraisal ----- 140,90€	
Issuing the building permit	
Depending on the licensing period:	
Up to 2 years -----	12,47€/month
From 2 - 4 years -----	14,96€/month
More than 4 years -----	68,55€/month
Depending on the area	
Industry -----	3,09€/m2
For infrastructure reinforcement and maintenance:	
Industry -----	0,31€/m2
Authentications	
Work Book -----	23,70€
License Issuing	
For each fraction of 100m2 of gross construction area -----	23,70€

Timescales:		
Approval of the architectural project -----		8 dias
Approval of specialist projects -----		8 dias
Issuing the building permit -----		2 dias
Issuing a license -----		2 dias

Measures to Support Investment and Employment 3.

As a prominent municipality in the interior of Portugal, Castelo Branco is covered by a series of investment and job creation initiatives that increase its attractiveness for new businesses and workers.

With the aim of outlining a strategic program to support the geographical mobility of workers and their families to the inland territories, in 2020 the Government of Portugal created the Working in the Interior Program.

Among the measures launched as mechanisms for attracting investment and labor, we highlight Emprego Interior MAIS - Mobilidade Apoiada para um Interior Sustentável [Interior Employment MAIS - Supported Mobility for a Sustainable Interior], which encourages labor mobility through financial support granted directly by the Institute for Employment and Vocational Training [IEFP].

The granting of this support presupposes the signing of an employment contract [open-ended or lasting at least 12 months] or the creation of jobs associated with moving to the country for a minimum period of 1 year.

In order to boost job creation and entrepreneurship in the region's inland areas, the **+CO3ESO Employment** system was set up in parallel with the above action. This measure is operationalized through 3 different modalities:

- +CO3SO Interior Employment
- +CO3SO Urban Employment
- +CO3SO Employment Social Entrepreneurship

The **Regressar Program** is a strategic program to support the return to Portugal of workers who have emigrated, or their descendants, reinforcing job creation, the payment of social security contributions, investment and the fight against demographic aging.



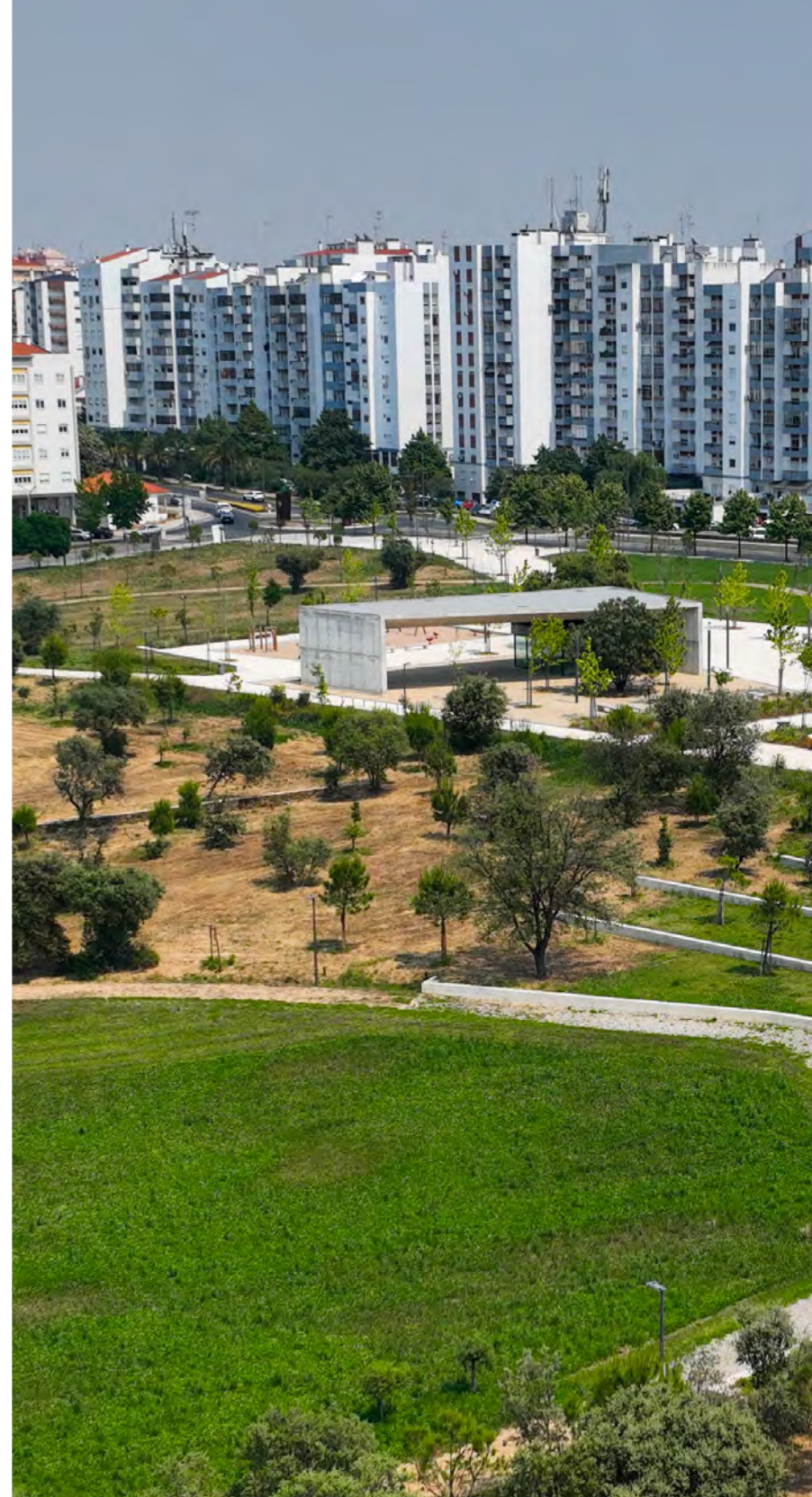
Tax Conditions and Municipal Incentives

The Municipality of Castelo Branco stands out as an attractive location for investors due to a set of more favorable tax conditions and incentives designed and developed based on the main needs of investors, but also the added value of the municipality.

Among the advantages offered are the possibility of reducing or exempting property taxes and business income, in order to promote and leverage the economic and financial sustainability of local companies. In addition, simplified licensing processes and more flexible regulations speed up the installation and operation of businesses.

Castelo Branco also directs its efforts towards regional development, stimulating entrepreneurship and diversifying the economy, so that investors can take full and maximum advantage of the conditions offered for setting up in the municipality.

This set of measures makes Castelo Branco a municipality with a favorable environment for investment, not only by offering tax advantages, but also by promoting economic growth, innovation and sustainable development.



1. Personal Income Tax (IRS) for Residents

Castelo Branco City Council has approved the return of 3.50% of Personal Income Tax (IRS) to residents for the year 2024. The preferential regime, which sets a higher personal income tax rate, will be reviewed in the 2024 State Budget.

The preferential regime sets a lower IRS rate for those who were not those who have not been tax residents in Portugal in the last five years prior to accession, to benefit from a reduced rate of 20% on employment income for 10 years.

2. Municipality Property Tax (IMI)

It is compulsory for any owner of a property registered on the Finance Portal to pay IMI every year. In addition to IMI, owners of buildings with a tax value of more than 600,000 euros are also required to pay the Additional Municipal Property Tax [AIMI] - individuals and companies. The payment of this tax is subject to exceptions.

The calculation is based on the asset value attributed to the building times the municipal tax rate, which will remain at 0.30% for Urban Buildings and 0.80% for Rural Buildings in 2024. The patrimonial value is only calculated once the owner has completed the registration of the building with the Tax Office and the Land Registry. The Municipality applies the minimum rate allowed, in accordance with Article 112(5) of the IMI Code.



Investment Support Tax Regime 3.

The Investment Support Tax Scheme is a regional aid scheme that allows a percentage of at least 10% of investments made in relevant applications to be deducted from taxable income, depending on the region.

The RFAI also covers other benefits, including:

- Exemption or reduction of Municipal Property Tax and Municipal Property Transfer Tax on the acquisition of properties that represent significant investments;
- Stamp Duty exemption on such acquisitions.

This tax regime and other advantages are compatible and can be accumulated with the DLRR, without prejudice to the benefits provided for in both frameworks.

Deduction of Retained and Reinvested Earnings [DLRR] 4.

The Retained and Reinvested Profits Deduction is an investment tax incentive scheme for SMEs that allows companies in the inland region to deduct up to 12% of their retained profits from their corporate income tax (IRC) - provided that they are reinvested in relevant applications.

Due to their location in Castelo Branco, these companies benefit from a 20% increase in the deductions made under the DLRR scheme when it comes to eligible investments made in inland territories.

In comparison, small and medium-sized companies, not located in the inland regions, only have access to a deduction from their corporate income tax (IRC) of up to 10% of retained profits that are reinvested in relevant investments, within four years of the end of the tax period to which the retained profits correspond, and up to 25% of the IRC tax. In the case of micro and small companies, this deduction is made up to 50% of the corporate income tax collection.



Corporate Income Tax (IRC) 5.

In order to support small and medium-sized companies located in the inland regions, reduced corporate income tax rates have been set: in 2023, a reduced rate of 12.50% was applied for the first 50,000.00 euros of taxable income. Access to and benefit from the reduced rate is based on cumulative compliance with the following conditions: [1] Exercise of activity and effective management in the interior territories; [2] Payment of regularized salaries; [3] Not resulting from the demerger of another company in the previous 2 years; [4] Complying with the determination of taxable profit through direct valuation methods or under the simplified regime for determining taxable income.

Castelo Branco is covered by the Internal Regime set out in Ministerial Order no. 208/2017 of July 13, and the Tax Benefits Statute, art. 41 b) no. 1, whereby micro and medium-sized companies have a rate of 12.50% for the first €50,000.00 of taxable income.

Property Transfer Tax (IMT) 6.

In the specific case of Castelo Branco, property owners are subject to the rates for mainland Portugal, which vary between 1% and 8% - according to the highest value resulting from the comparison between the acquisition value of the deed or property and the taxable asset value.

However, exceptions are made for rural and urban properties [including residential properties], when the purchaser is a resident in a tax haven [except individuals] or is an entity dominated or controlled, directly or indirectly, by an entity domiciled in a tax haven, to which a rate of 10% applies.

Exemption from the Municipal Surcharge 7.

The municipal surcharge is payable to the municipality where the company has its head office, although the profit of each of its representations and/or delegations can be assessed individually - if they are located in different municipalities. As part of Castelo Branco's strategy for attracting investment, a total exemption from the municipal surcharge has been applied.



Recognizing the fundamental role that education plays in the sustainable development of the Castelo region, it is important to consider a comprehensive view of the local education system and its implications for investors. Castelo Branco is not only a strategic destination for promising businesses; it is also a place conducive to intellectual and professional growth.

The Municipality of Castelo Branco has a diverse and dynamic school network, which reflects the local community’s commitment to quality education and guarantees an environment conducive to academic, cultural and social development:

Level of Education	Establishments	Public	Private
Nursery and Pre-School Education	30	17	13
1st Cycle	25	22	2
2nd Cycle	7	7	-
3rd Cycle	9	8	-
Secondary School	5	2	2
Higher Education	1	1	-

Educational Offer

As a consequence of the quality of education available, it is important to emphasize the synergies between the education sector and the specific needs of local industries. Castelo Branco sees itself as a city committed to cultivating talent, providing investors with a strategic advantage in the search for a highly qualified workforce.

Rede Escolar

In this context, there are two Technological and Vocational Schools, both private - **Agostinho Roseta and ETEPA** - as well as the Training Courses promoted by the IEFP. The vocational schools excel in providing a diversified educational offer, taking into account the different vocations of their students:

ETEPA’s training offer:
Professional Courses: Computer Equipment Management Technician; Communication-Marketing, Public Relations and Advertising Technician; Sociocultural Animator; Graphic Arts Technician.

Education and Training Courses: Photography Operator

Agostinho Roseta training offer:
Kitchen / pastry technician, Restaurant / Bar technician; Pharmacy assistant technician.

Higher Education

The Polytechnic Institute of Castelo Branco [IPCB] stands out as a renowned higher education institution, offering a wide range of educational opportunities that meet the diverse needs of students and the demands of the business world. The educational offer includes:

- 32 Bachelor's degrees;
- 23 Masters;
- 4 Postgraduate courses;
- 28 Professional Higher Technical Courses (CTeSP).

The apprenticeship areas on offer include: Agriculture; Applied Arts; Education; Management; Health.

In addition to the Castelo Branco Polytechnic Institute, there is also the Albicastreense Senior University [USALBI], which offers educational programs in 16 parishes in the municipality and has more than 1,300 students.



Instituto Politécnico
de Castelo Branco
Polytechnic University



+ 4800
Students Enrolled



95%
Employability rate



USALBI
Universidade Sénior
Albicastreense



+ 1300
Students Enrolled



55
Professors



Campus Roundabout

Environment

This last segment offers an in-depth analysis of the environmental factors that make the Municipality of Castelo Branco suitable for investment and that place it at the forefront of the commitment to sustainability and the preservation of the local environment. Castelo Branco stands out not only for its business opportunities, but also for its commitment to balancing economic development with environmental conservation.

We explore the local policies, sustainable practices and initiatives that shape the environmental landscape, providing a comprehensive overview of the city's commitment to environmental responsibility.

The Municipality embraces innovative practices to preserve natural resources, promote renewable energies and minimize environmental impacts, in favor of sustainable economic development.

As such, Castelo Branco is proud to fly the ECOXXI 2023 Green Flag, the country's greatest symbol of sustainability, and is an active member of adapt.local - the Network of Municipalities for Local Adaptation to Climate Change - making a positive contribution with a framework of policies and instruments suited to the new environmental issues.



Municipal Sustainability Policies

The Municipality of Castelo Branco considers climate change to be one of today's major challenges. As this area of action is a priority, the **Municipal Strategy for Adaptation to Climate Change [EMAAC]** was implemented. This strategy aims to create a unified and effective response to environmental issues at both regional and national levels. At the same time, the Municipal Regulations for the Management of Trees in the Urban Environment of the Municipality are intended to contribute to the integrated and sustainable development of the territory and its inhabitants, improving the quality of life and well-being of communities.

At the same time, the **Castelo Branco Environmental Interpretation Center (CIA)** was created, whose mission is to raise awareness of environmental conservation, with a special emphasis on preserving the Tejo Internacional Natural Park. This center explores themes related to the territory, natural heritage [such as fauna, flora, geology, and hydrology], built heritage and eco-tourism activities, as well as providing a virtual experience along the River Tagus.



Distribution of Green Spaces

Green spaces play a crucial role in the contemporary urban scene, functioning as the green lungs of cities.

In the Municipality of Castelo Branco, the following areas stand out:

- Castelo Branco Barrocal Natural Park;
- Horta do Ribeiro Valley;
- Unbuilt slopes of the Castelo hill and rural areas to the north;
- Quinta do Chinco Social Gardens, to the north of the Carapalha neighborhood;
- Quinta do Moinho Velho;
- Cruz do Montalvão Urban Park;
- City Park;
- Castelo Branco Leisure Area.

In addition to these spaces, the municipality has a network of small and medium-sized hiking trails that make up the route of the municipality of Castelo Branco:

- Gardunha Route;
- Martim Branco Schist Trail;
- Sarzedas Schist Trail;
- Marateca Route;
- Poço dos Sinos - Sarzedas Route;
- Lagares Route - Alameda;
- Mills Route - Alameda/Sarzedas;
- Magueija Stream Route - Sarzedas.



Environment Protection Zones

The municipality of Castelo Branco is home to one of Portugal's 14 Natural Parks - the Tejo Internacional Natural Park [PNTI], which has been classified as such since August 2000. Within the PNTI there is also an SPA - Special Protection Areas - established under the Birds Directive Zones, essentially to guarantee the conservation of bird species in the territories of the Rio Tejo Internacional, Erges and Ponsul [code PTZPE0042].

The protected regional landscape of Serra de Gardunha is also an area of environmental protection that integrates the county of Castelo Branco, alongside Fundão. ries of the Rio Tejo Internacional, Erges and Ponsul [code PTZPE0042].



Energy Generator Centers

Installed in operation:

- Gardunha wind farm - Type: Wind farm - Parish: Alameda e São Vicente da Beira - Installed capacity (MW): 36,3;
- União de Freguesias Cebolais Cima e Retaxo Wind farm - Type: Wind farm - Parish: Alameda e São Vicente da Beira - Installed capacity (MW): 8.

Soon to be operational:

- Albispark Photovoltaic Plant - Type: Solar Photovoltaic - Parish: Benquerenças - Installed capacity (MW): 30;
- Alcains Photovoltaic Plant - Type: Solar Photovoltaic - Parish: Alcains - Installed capacity (MW): 1;
- Monte Brito Photovoltaic Plant - Type: Solar Photovoltaic - Parish: Castelo Branco - Installed capacity (MW): 2.

